

Quick Start Guide - Under-Desk Basket Cable Tray

1. **Warning: Safety Gloves must be worn when mounting this product.**
2. **There may be extra connectors in the package.**

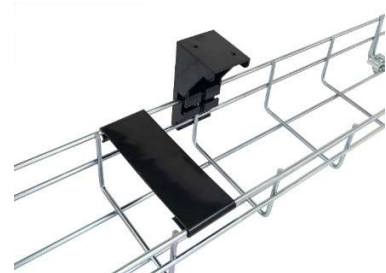
Step 1.

Depending on the length, you may need to connect 2 or more tray sections together using the connectors provided in the package, shown in the image left.



Step 2.

Add the plastic mounting brackets to the tray. They must be mounted always on one of the joints (where the horizontal and vertical wires meet). First slide it down then along the back, then pull up, shown in the image left.



Step 3.

Add the end plastic caps. Please push firmly till they click in position.

Step 4.

Mount the cables plastic cover. The cable tray is now assembled and ready to be mounted under desk.



Step 5.

Using the assembled cable tray to mark the mounting points under desk or front panel, two points for each mounting bracket, drill a small pilot hole ($\varnothing 2$ to 3 mm) for each point.

Important Notes:

- There are 4 mounting holes in each MT mounting bracket, 2 facing up and 2 facing back. You can use any 2 of them to mount the bracket whichever are more convenient in your situation, and only 2 screws are provided for each bracket.
- The max load per MT mounting bracket is 5KG. As per below table, all trays come with 2 MT except CT180+3MT which has 3 MT, so the max load per tray is 10 KG (15KG for CT180+3MT).

CT-series under desk cable trays

MODEL	Description	MODEL	Description
CT80+2MT	80cm long	CT140+2MT	140cm long
CT100+2MT	100cm long	CT160+2MT	160cm long
CT120+2MT	120cm long	CT180+3MT	180cm long