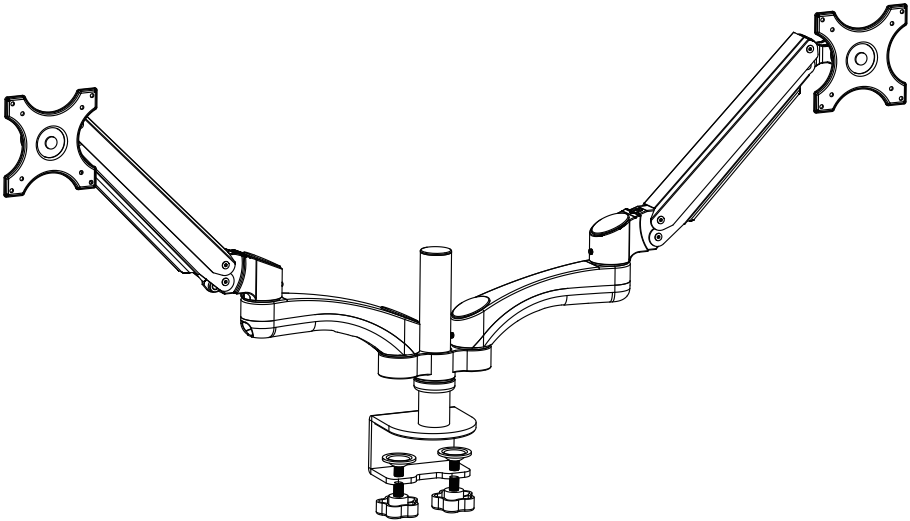


Installation Instruction



UNPACKING INSTRUCTIONS

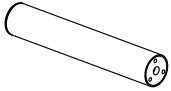
- Carefully open the carton, remove contents and lay out on cardboard or other protective surface to avoid damage.
- Check package contents against the Supplied Parts List in the next page to assure that all components were received undamaged. Do not use damaged or defective parts.
- Carefully read all instructions before attempting installation.

IMPORTANT SAFETY INFORMATION

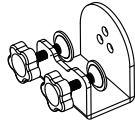
- Install and operate this device with care. Please read this instruction before installation, and carefully follow all instructions contained herein. Use proper safety equipment during installation.
- Please call a qualified installation contractor for help if you don't understand these directions or have any doubts about the safety of the installation.

Do not use this product for any purpose or in any configuration not explicitly specified in this instruction. We hereby disclaims any and all liability for injury or damage arising from incorrect assembly, incorrect mounting, or incorrect use of this product.

Supplied Parts List



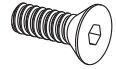
(1) Pole-a



(1) "C" Clamp-b



(2) VESA Plate with Gas Spring Arm-c



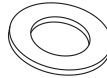
(3) M5x14 Bolt-d



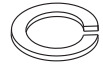
(1) M10 Bolt-e



(1) Support Plate-f



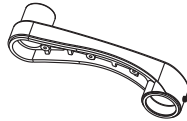
(1) M10 Washer-g



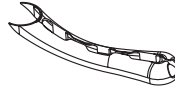
(1) Spring Washer-h



(1) Grommet Base Plate-i



(2) Add-on Arm-j



(2) Wire Cover-k



(4) Axis Cover-l



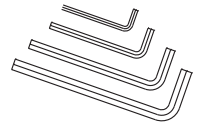
(1) Stopper Ring-m



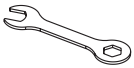
(6) M4x6 Bolt-n



(4) M6x12 Bolt-o



(1) Allen Key-p



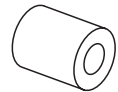
(1) Wrench-q



(8) M4x12 Thumb Bolt-r



(8) M4x30 Bolt-s



(8) M4 Space-t



(1) Arm Connector-u



(1) Soft Pad-v1



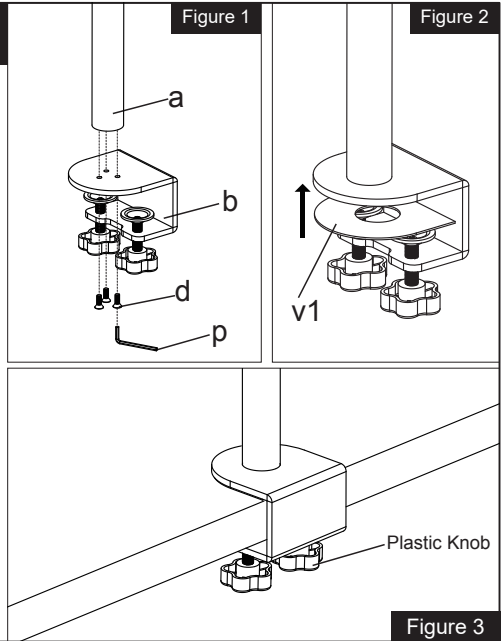
(1) Soft Pad-v2

Step 1

Install the Pole to the Desktop

Option A: Desk Clamp Install

1. Install the "C" Clamp (b) to the Pole (a) using 3pcs M5x14 Bolts (d), and tighten using the Allen Key (p), see Figure 1.
2. Attach Soft Pad (v1) to the "C" Clamp (b), see Figure 2.
3. Tighten the "C" Clamp (b) to the desktop using the plastic knob, see Figure 3.

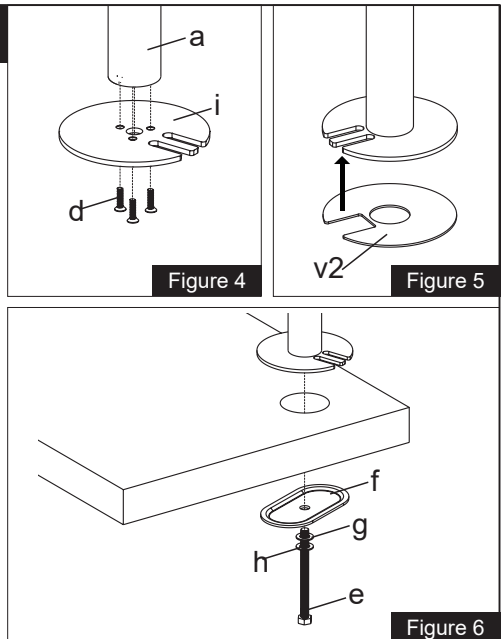


Option B: Grommet Base Install

Existing Grommet Hole Installation

If the existing grommet hole comes with a plastic protector, remove it to ensure a flat surface before installing the desk mount.

1. Install the Grommet Base Plate (i) to the Pole (a) using 3pcs M5x14 Bolts (d), and tighten using the Allen Key (p), see Figure 4.
2. Attach Soft Pad (v2) to the Grommet Base Plate (i), see Figure 5.
3. Position the Pole (a) on the mounting surface and secure using the Support Plate (f), M10 Washer (g), Spring Washer (h) and M10 Bolt (e). Fasten the M10 Bolt using provided Wrench (q), see Figure 6.



Step 1

Install the Pole to the Desktop

Option C: Grommet Base Install

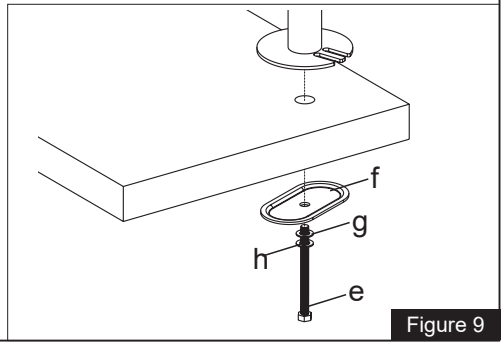
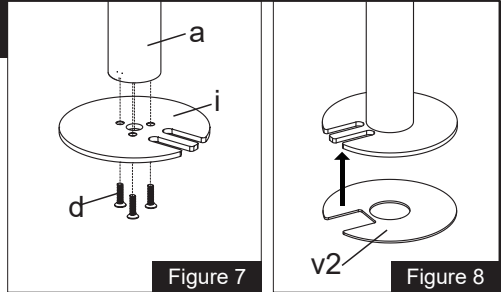
Self Drilled Grommet Hole Installation

1. Position the Pole (a) on the mounting surface and mark the center hole. Drill a 3/8" (10mm) diameter hole at the marked position through the mounting surface.

2. Install the Grommet Base Plate (i) to the Pole (a) using 3pcs M5x14 Bolts (d), and tighten using the Allen Key (p), see Figure 7.

3. Attach Soft Pad (v2) to the Grommet Base Plate (i), see Figure 8.

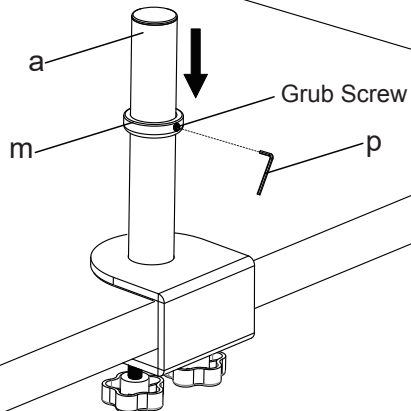
4. Position the Pole (a) on the mounting surface and secure using the Support Plate (f), M10 Washer (g), Spring Washer (h) and M10 Bolt (e). Fasten the M10 Bolt using provided Wrench (q), see Figure 9.



Step 2

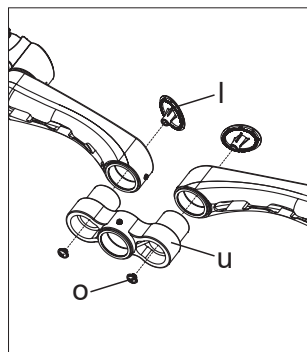
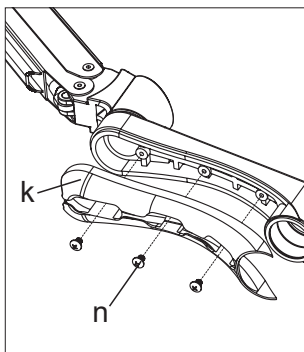
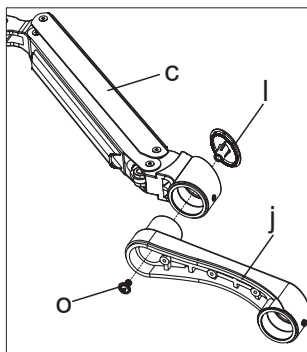
Install Stopper Ring to the Pole

Install Stopper Ring (m) to the Pole (a), fasten the grub screw by supplied Allen Key (p).



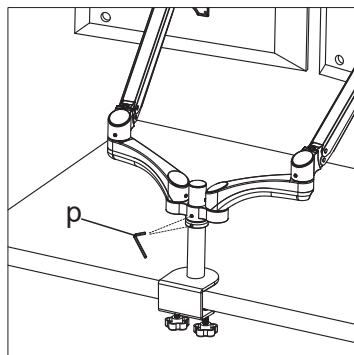
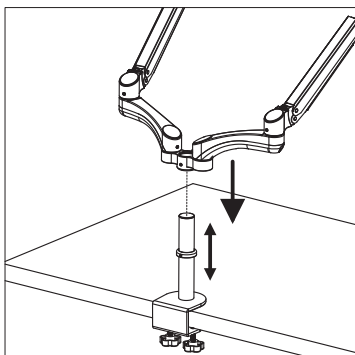
Step 3

Assemble Two Arms and Wire Cover



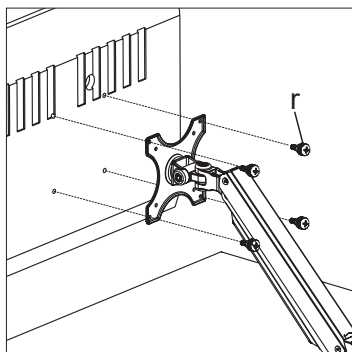
Step 4

Install Arm to the Tube Support

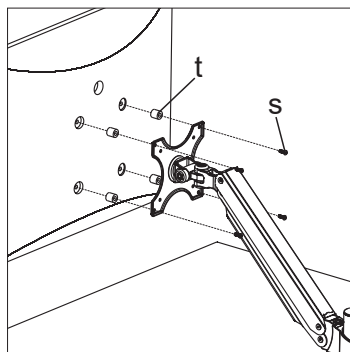


Step 5

Mount the Monitor to VESA Plate



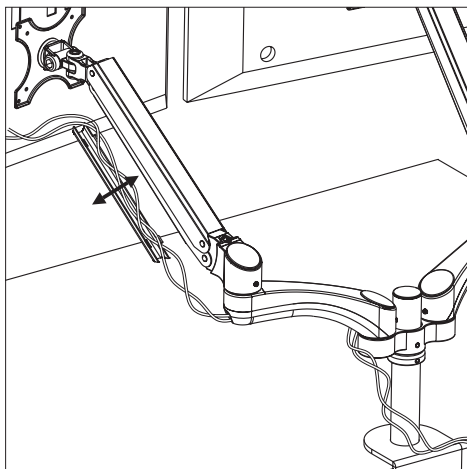
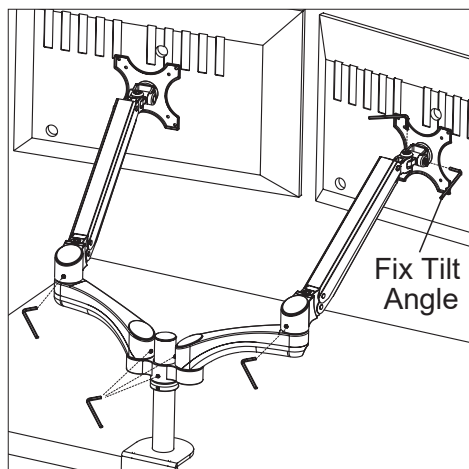
For Flat Back Monitor



For Curved Back Monitor

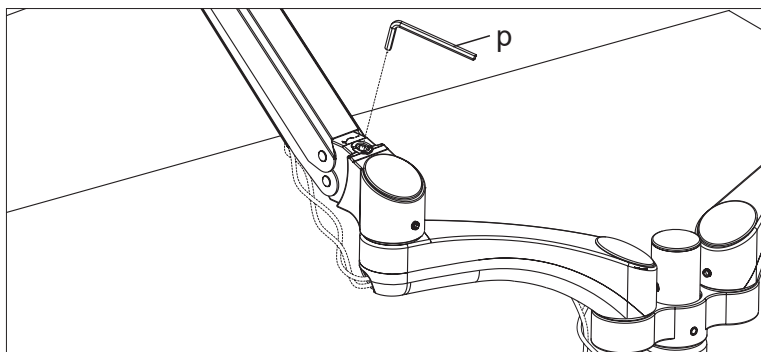
Step 6

Make Necessary Adjustments, and Run Cables



Step 7

Adjust the Torque of Gas Spring



Adjust the torque of gas spring according to the weight of your monitor. If your monitor can not stay in the lower position, turn the grub screw clockwise(-). If your monitor can not stay in the higher position, turn the grub screw counterclockwise(+). Keep turning until monitor position can be raised and lowered easily.

Thank you for choosing our products.